

ISLE Open Educational Resources

About IOER

September 14, 2015

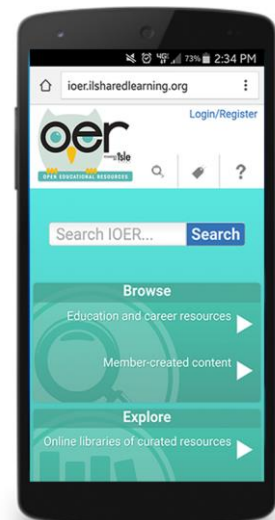


ilsharedlearning.org
#IOER



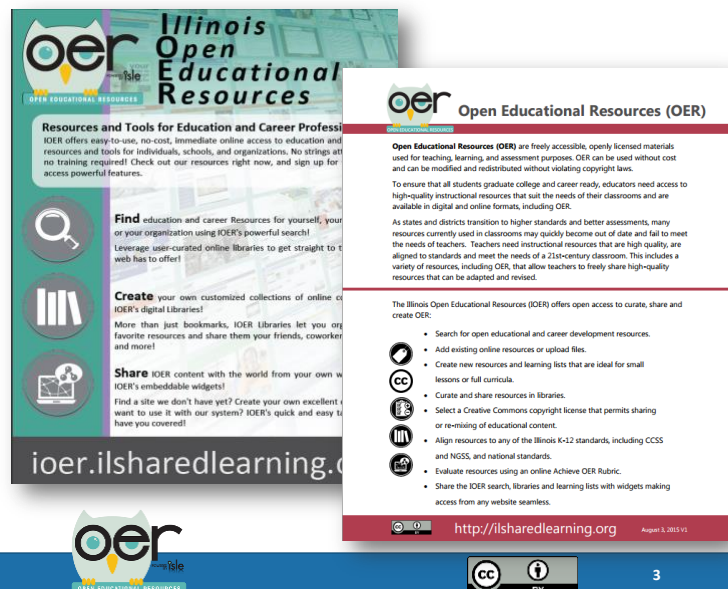
IOER Overview

- About Illinois Open Educational Resources (IOER)
- IOER Tools
- Learning Standards in IOER
- IOER Widget Examples
- IOER Integration with other ISLE Apps
- How Schools Use IOER
- STEM Learning Exchanges and Illinois workNet®



About Illinois Open Educational Resources (IOER)

IOER provides open access and tools for curating, sharing and creating career and educational resources.

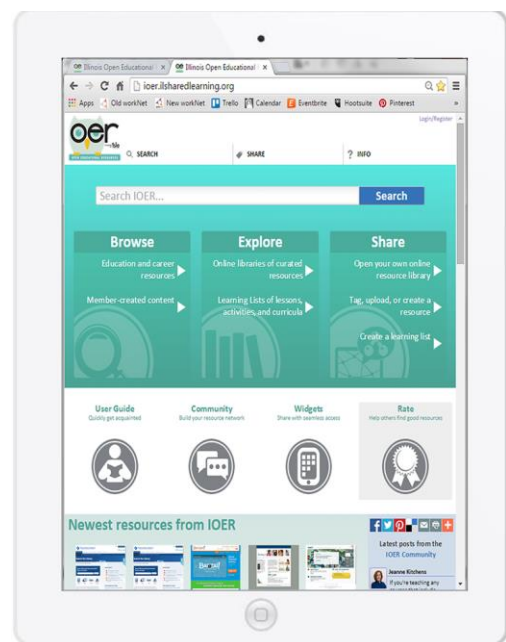


About IOER

IOER is open to anyone but also provides organizations the ability to determine their members and what resources they want to share.

IOER gets resources from:

- National Learning Registry
- STEM Learning Exchanges
- Illinois workNet®
- State Agencies
- Schools, organizations, and people who create open educational resources.



About IOER

Tools for curating,
sharing, and creating
career and
educational resources.

- Education & career resources.
- IOER member created content.

**Find & Use
Resources**



- Libraries with curated resources.
- Learning lists with lessons, activities, or entire curriculum.

**Explore
Libraries &
Learning Lists**



- Setup your personal account.
- Be an organization member.

Sign Up



- Open a library & follow others.
- Tag an online resource, upload, or create your own.
- Build learning lists.

**Share Your
Resources**



- Add IOER widgets to your website.
- Participate with the IOER community.

**Build
Communities**



- Like & comment.
- Rate standards alignment.
- Rate resources.

**Rate &
Evaluate**



5

IOER Tools

The next three slides show a list of the components currently available with IOER.

Tools	Description
Resources Search	Search for learning resources using keywords and a wide variety of filters, including standards alignment, grade level, career cluster, and more.
Learning Standards Browser	Review and search by Learning Standards.
Libraries	User-created digital collections of curated resources. Public (seen by everyone) and private (seen only by owner and people they invite) libraries for organizations (e.g. agencies, school districts, programs, universities, and colleges) and people for curating and organizing resources in collections. Libraries can be followed and usage information is directly available from each library.
Learning Lists	Groupings of related resources and files that can include standards alignments. Groupings can include levels as a hierarchy. The standards alignments are based on PARCC color coding and alignment types (i.e. Major, Supporting, and Additional). Users can download files at any level and explore all or any sections of a Learning List. Learning Lists can be followed and usage information is directly available from them.
Quick Tag Tool	Submit a webpage or a file that is already hosted online, tag it with basic information, and enhance your tags later. Includes ability to align standards.
Quick File Upload Tool	Upload a file, tag it with basic information, and enhance your tags later. Includes ability to align standards.

Tools	Description
Create Learning List Tool	Create Learning Lists with web pages, files, and learning standards. Keep it private until complete and ready to publish.
Create a New Resource Tool	Create a simple web page and attach multiple files and references to it with this tool. Includes ability to align standards.
Full Tagging Tool	Fully tag resources based on all potential metadata.
Communities	The ISLE Community allows you to post to communities, see who's posting to communities and post to other peoples' posts within the community. Communities can be setup by subject, school district, or other interest areas.
Resource Information	Details about the resource, keywords, learning standards, and similar resources.
Like or Dislike	Shows total likes and dislikes and is a sort option with the search.
Comment	Add comments about a resource, Learning List, or library.
Add to Library	Add resources to a library.
OER (Achieve) Rubric	This tool is modeled on the Achieve OER Rubrics Collection and is designed to evaluate Resources hosted in the IOER site. Select the ratings that best apply to the resource.
CCSS Mathematics, CCSS ELA (K-2) and (3-12) Rubrics	This tool is a derivative of the Achieve EQuIP Common Core States Standards (CCSS) Rubrics. They can be used with any type of resource. Select the ratings that best apply to the resource.
Timeline	Shows all a timeline of human interactions that users indicated are public.

Tools	Description
Activity and Statistics	Sessions, logins, registrations, total users by organization, library usage and more.
User Guide	Download PDFs, PPTs, and watch videos.
My Dashboard	<ul style="list-style-type: none"> Create an account and profile. Return to and manage Learning Lists and created or tagged resources. Access followed libraries and Learning Lists. See your timeline. Manage organization information, including users.
Other Administration Tools	<ul style="list-style-type: none"> Groups/Organization Management Library and Learning List Management

Learning Standards in IOER

Learning standards can be browsed, searched, aligned to resources and rated for alignment.

Levels	Learning Standard	Levels	Learning Standard
K-12	Illinois (CCSS) Math Standards	Adult Education	Illinois (ABE/ASE) Reading Standards
K-12	Illinois (CCSS) ELA/Literacy Standards	Adult Education	Illinois (ABE/ASE) Writing Standards
K-12	Next Generation Science Standards	Adult Education	Illinois (ABE/ASE) Mathematics Standards
K-12	Illinois Fine Arts	Adult Education	Illinois (ABE/ASE) English Language Arts Standards
K-12	Illinois Physical Education and Health Standards	National K-12	Framework for 21 st Century Learning
K-12	Illinois Social Science Standards	National K-12	National Health Education Standards
K-12	Illinois Social/Emotional Development Standards	National K-12	National Standards for Personal Finance Education
K-12	Illinois Foreign Language Standards	National K-12	Voluntary National Content Standards for Economics
		National K-12	National Standards for Financial Literacy

* Learning Standards are added as they become available in open formats that allow open sharing and tagging.



9

Additional Standards

Other learning standards and competency frameworks can be added. The system uses machine readable standards. The standards are obtained through Achievement Standards Network (ASN).



- Currently, they are working on converting the new national Agriculture Standards (endorsed by FFA).
- Other industry standards for K-12 and for postsecondary can be converted and included with IOER.

As ASN converts standards from PDF documents to machine readable, and interoperable frameworks, they are easily added to the IOER to allow for browsing, tagging, aligning, rating, and more.



10

IOER Widget Examples

Widgets provide seamless access from your website. Copy and paste a short code snippet to embed a widget on any website (<http://ioer.ilsharedlearning.org/widgets/>).

Widget	Description
Learning List Explorer	Learning Lists are the best way to group and organize educational resources that need to be shown as having a direct relationship. Any Learning List can include: documents and several types of files, web pages, and learning standards. Levels, or branches, can show a hierarchical organization with descriptions and instructions.
Resource Search	Providing a wide variety of Filters to refine your search, IOER has developed robust criteria for your search, such as Standards, Grade Level, Subjects and Career Clusters. Finding quality learning materials is easier than ever with tools to sort and organize by Newest, Most Liked, Most Commented On, and a wide variety of Views and Libraries.
Standards Browser	The IOER Standards Browser allows you to quickly and easily browse and find a variety of Learning Standards at both the national and Illinois levels. It also allows you to search the IOER Resource repository for learning resources that are aligned to the learning standards that you select.
Library/Collections	IOER Libraries provide many ways for you to tag, contribute, create, organize and share your learning resources with fast and easy-to-use tools that allow for public and private settings. User and Organizational Libraries allow individuals and groups to quickly categorize their learning resources in so many ways.
Full Search	Add the full blown IOER search to your website--includes search bar, filters, and results. Highly configurable.

How Schools Use IOER

Example of a school district:

- Setup an organization.
- Email addresses can be used to automatically allow members.
- Select administrators and curators.
- Curate resources for school community with libraries.
- Upload lessons, activities or entire curriculum in Learning Lists.
- Create a community.
- Provide seamless access to the school community by putting IOER widgets on the school website.
- Use for professional development and rate resources.



STEM Learning Exchanges and Illinois workNet

Examples of STEM Learning Exchanges using OER:

- Health Science – Entire high school curriculum and library with curated resources and widgets are on their website.
- Information Technology – Ongoing tagging of resources curated for their library and widgets are on their website.
- Energy – Ongoing tagging of resources curated for their library and learning list and widgets are on their website.
- Finance – Ongoing tagging of resource curated for their library and for a financial literacy library and financial literacy widget for NIU P-20 Financial Literacy web page.

Example of how Illinois workNet®, the state's workforce portal, uses OER:

- Libraries for curating resources and search widgets are on the website.
- Related resources widget for articles and web pages.



13

IOER Integration with Other Illinois Shared Learning Environment Apps

- **App Launcher** – School district staff sign in and can launch the IOER web app. The app launcher keeps the staff signed in so they can use all tools and functionality when they open up IOER.
- **NIU Dashboard for K-12 Schools** – School district staff have direct access to IOER via their dashboards. When they access any of the IOER screens directly on their dashboards, the IOER keeps the staff signed in so they can use all tools and functionality.

IlliniCloud App Launcher



14

IOER Integration with Dashboards

These are some screens directly accessed/integrated via the dashboards.

49 // Easy Things You Need to Know to Start Using the ISLE Educator Dashboard!

1. Log on and select the year and school

Access the dashboards at <https://www.isledashboards.org>

Log on by entering your district email, select your district, and enter your district password.

Welcome to the Educator Dashboard Home Screen!

Use the drop down menus to select the building and year you would like to view.

Once selected, your classes will display on the My Students tile.

oer
OPEN EDUCATIONAL RESOURCES

CC BY 15



Online contact form:

<http://www2.illinoisworknet.com/Pages/Contact-Us.aspx>

Email: info@siuccwd.com

ilsharedlearning.org

#IOER



Sponsored by:
Illinois Department of Commerce and Economic Opportunity
and Illinois State Board of Education

